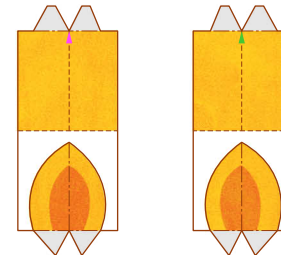


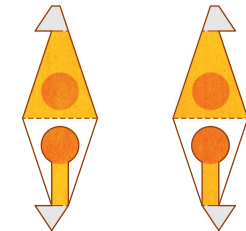
A 2



A 3 x2



A 4 x2



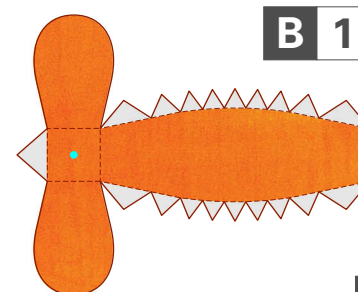
● Pattern: 6 sheets ● Assembly Instructions: 4 sheets ● Number of parts: 51

● You will need: Scissors, glue, strong adhesive, a ruler, a used ball-point pen
String (a fairly strong type of thread. The color is up to you, but we recommend gray, yellow, or orange.)

● Assembly tip: Trace along the folds with a ruler and a used pen (no ink) to get a sharper, easier fold.

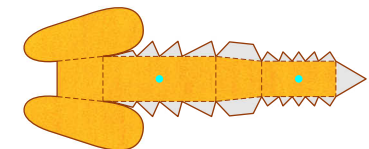
----- Mountain fold - - - - - Valley fold ——— Scissors line
 [Glue spot] [Scissors icon] Cut out ——— Cut in line
 ● Hole for threading string through (use an old pen or other object to make the hole.)

Caution: Glue, scissors and other tools may be dangerous to young children so be sure to keep them out of the reach of young children.



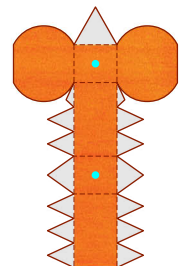
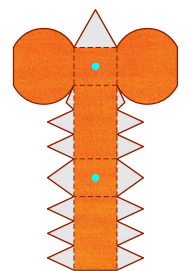
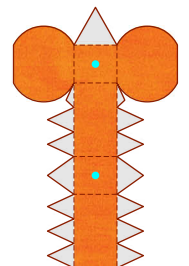
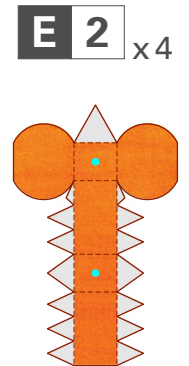
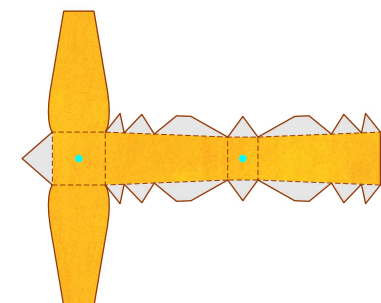
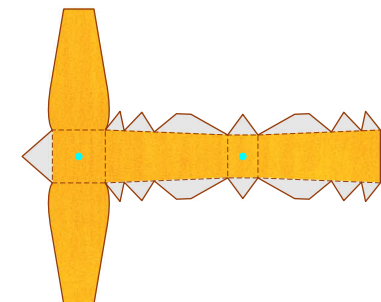
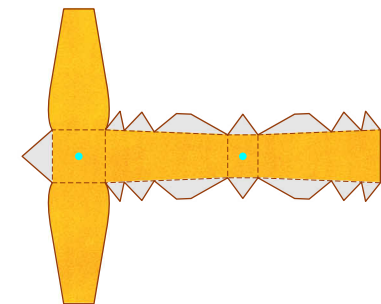
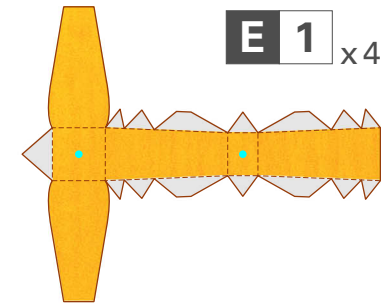
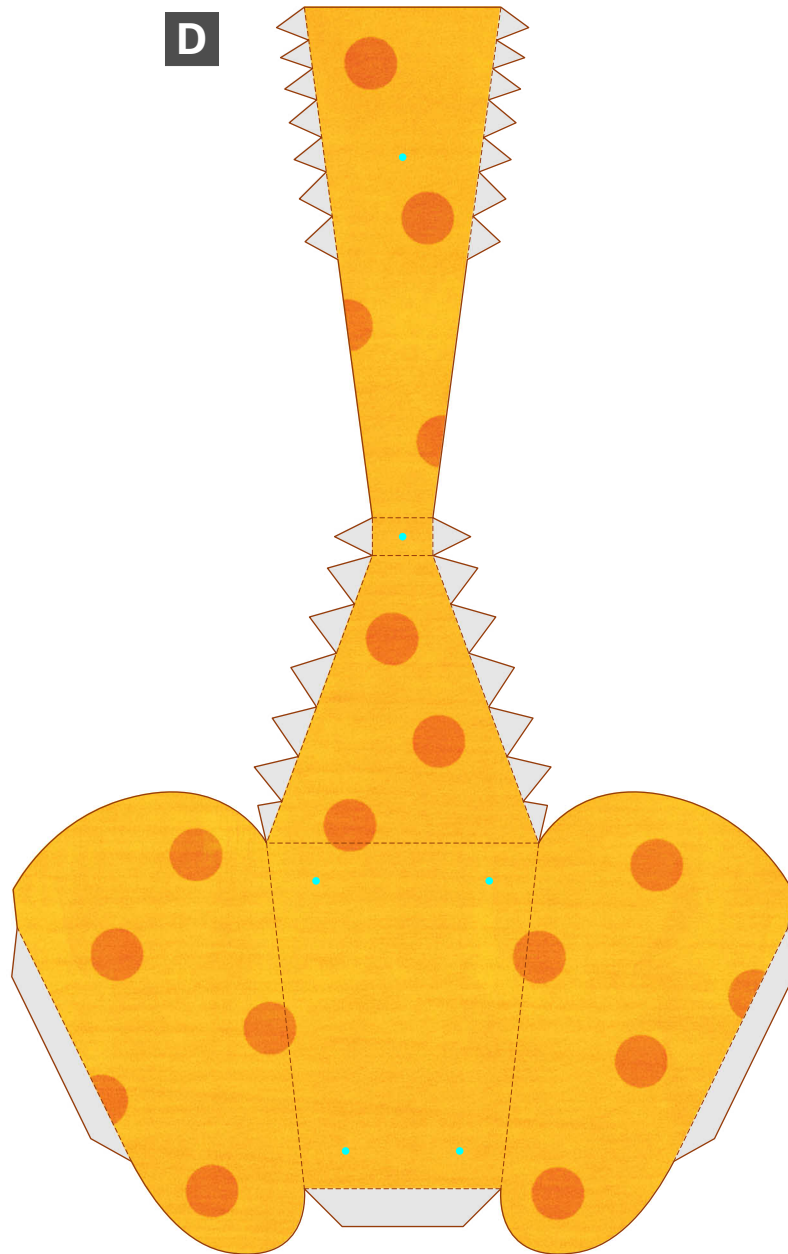
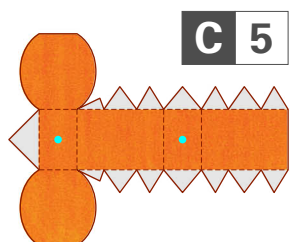
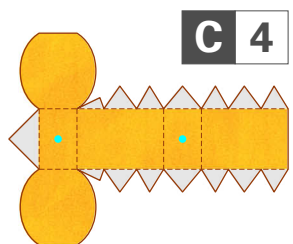
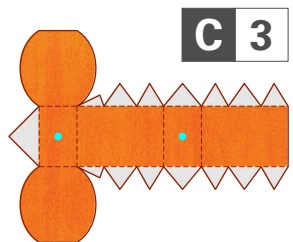
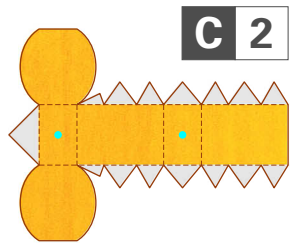
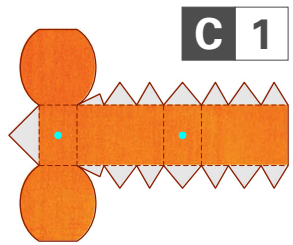
B 1

B 3

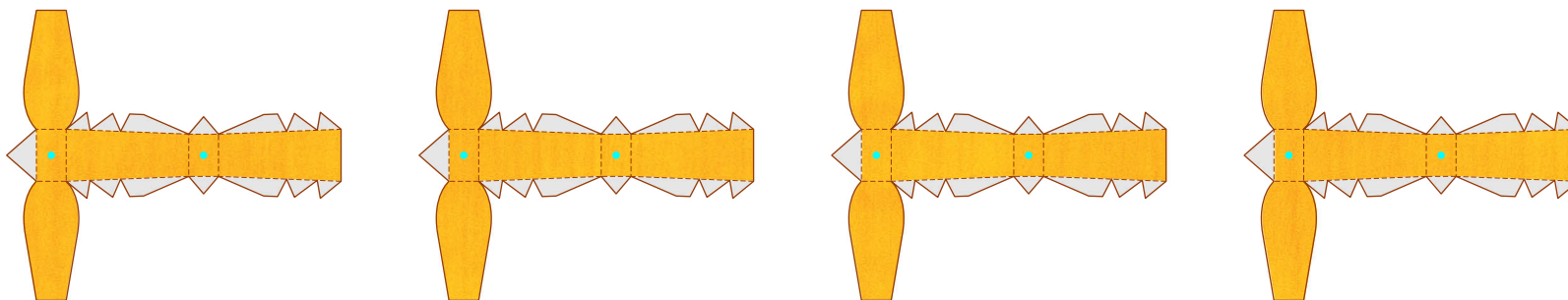


B 2

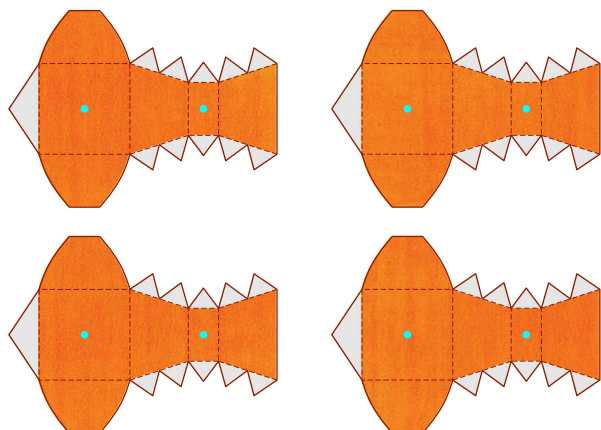




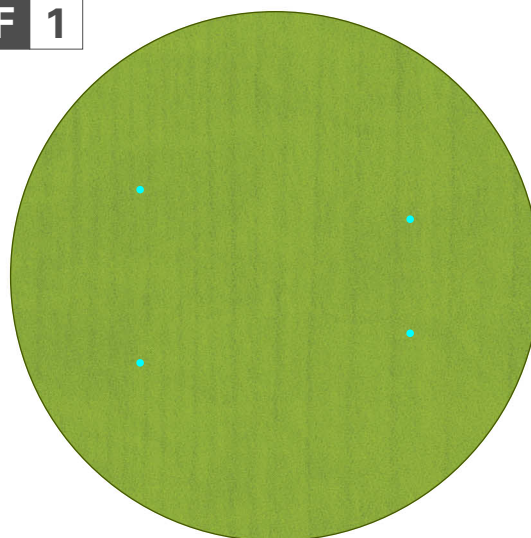
E 3 x4



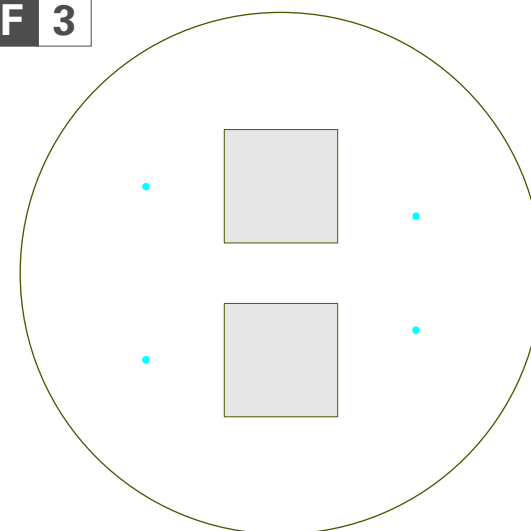
E 4 x4



F 1



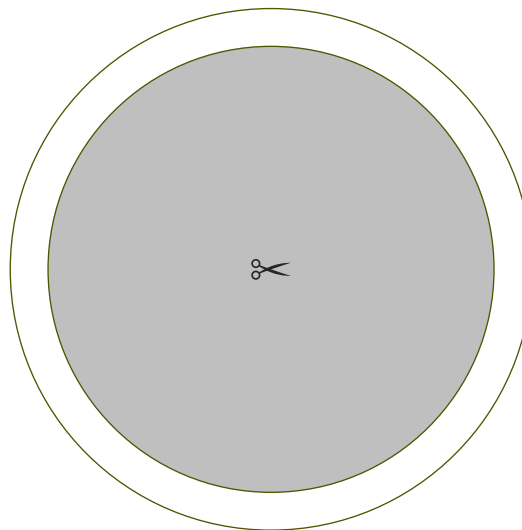
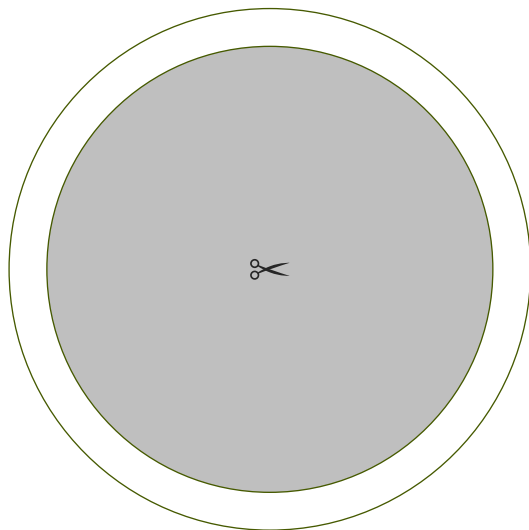
F 3



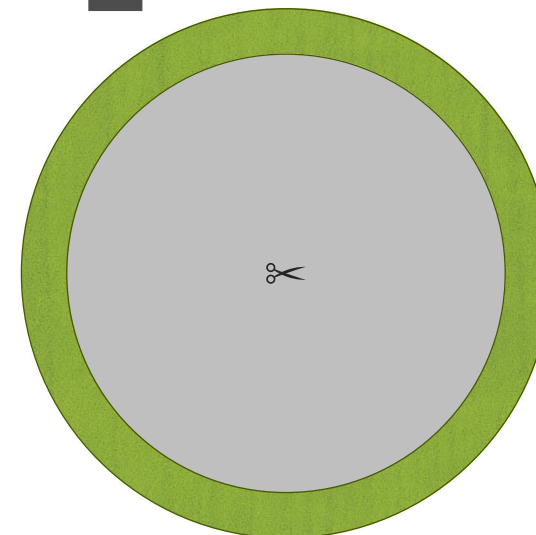
F 2



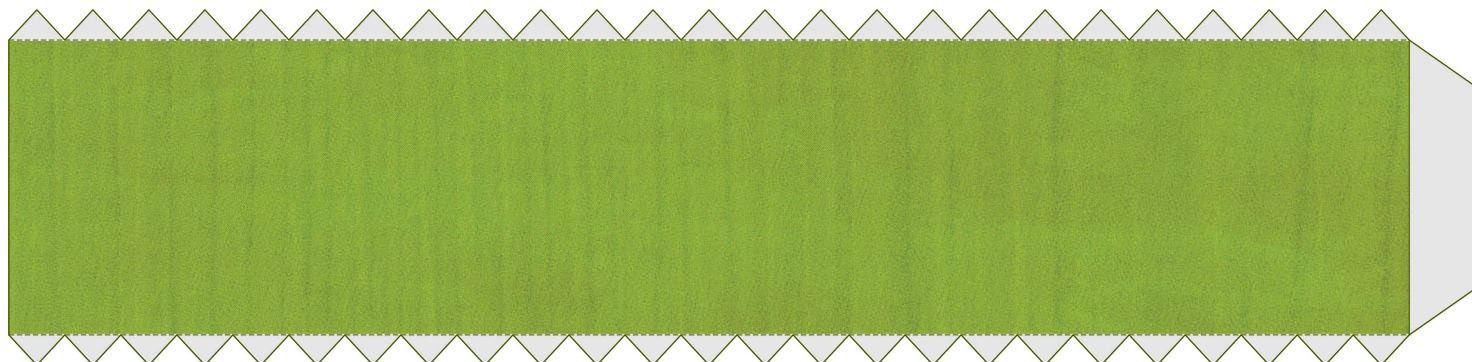
G 2 x2



H



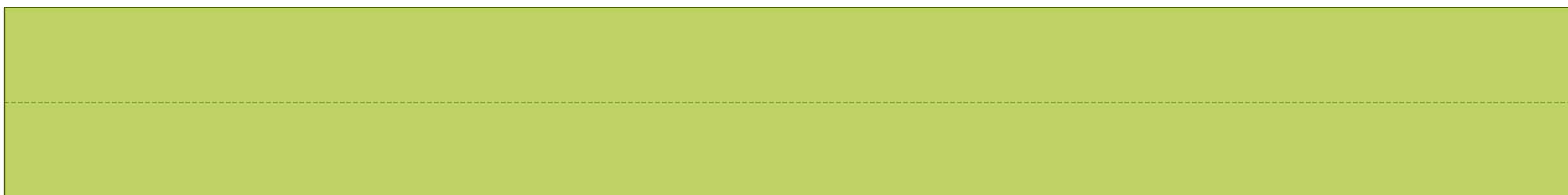
G 1



1 2



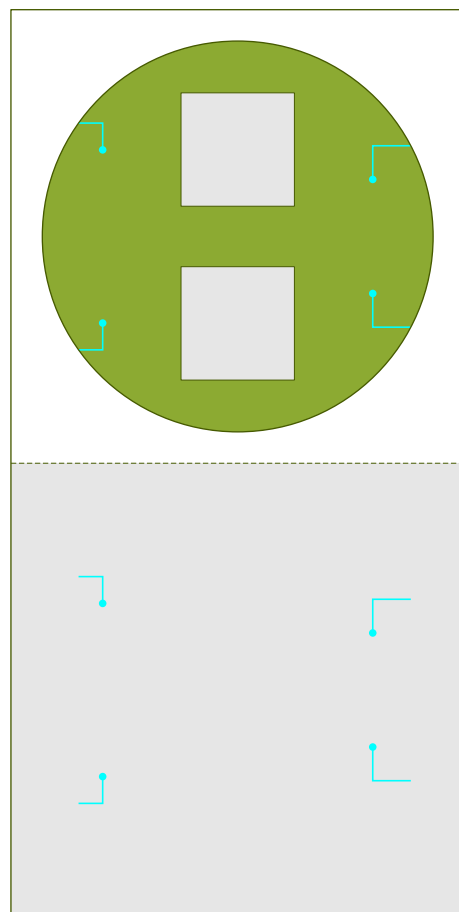
1 3



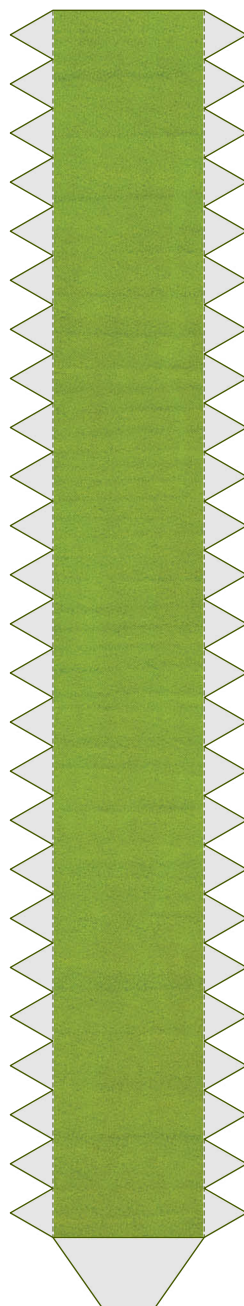
1 4 x 4



I 1



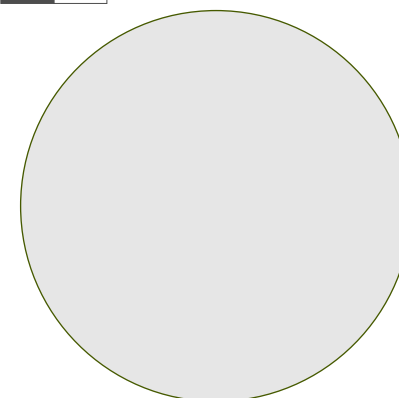
J 1



J 2



J 4



J 3

