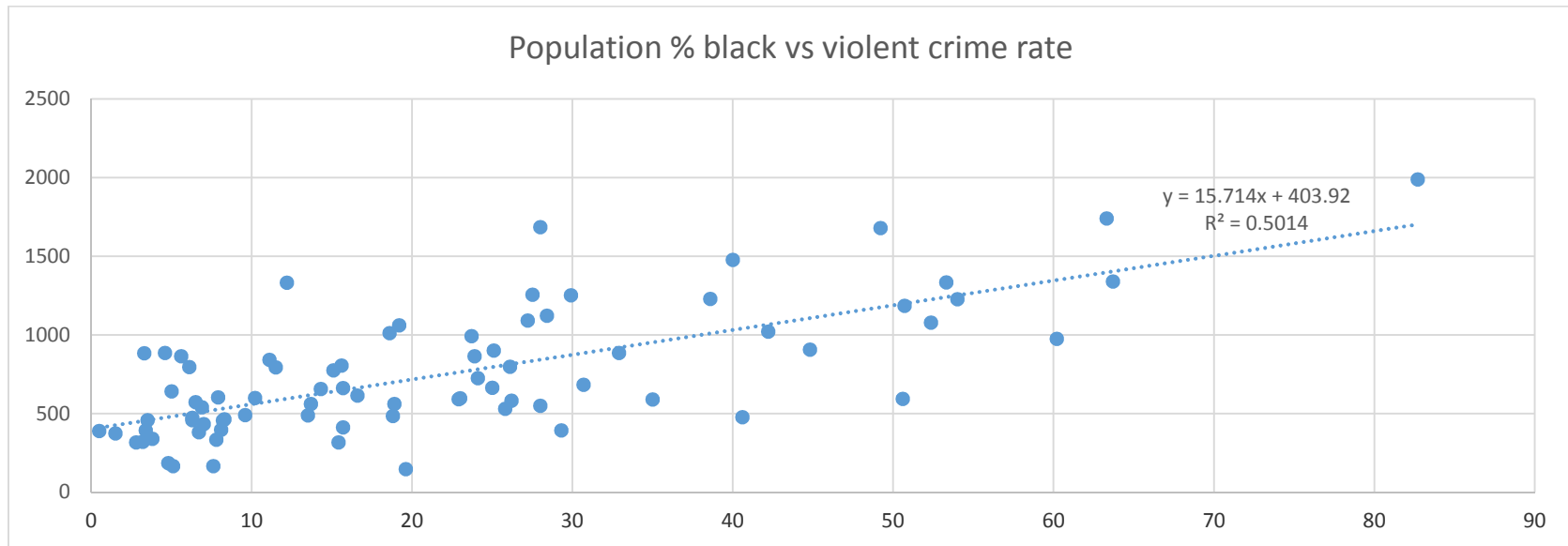


In all American cities with more than 250,000 people, the percentage of black people is a much more statistically reliable indicator of the violent crime rate than

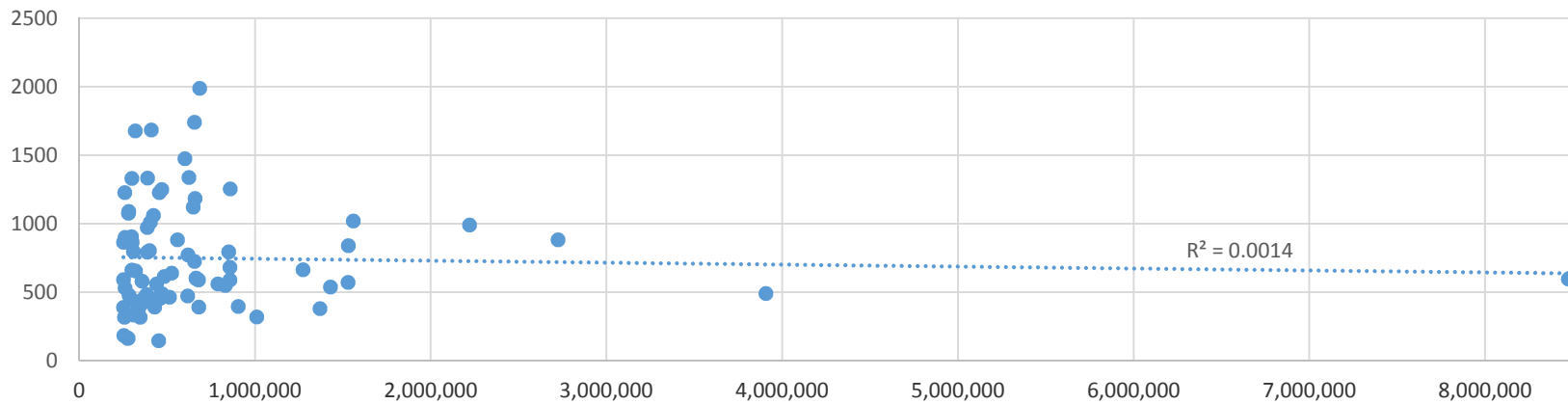
- the percentage of white or Hispanic people,
- the percentage of people living in poverty,
- the percentage of the population with educations,
- the population density, and
- the unemployment rate.

The only other indicator with any statistical significance at all is the percentage of people living in poverty.

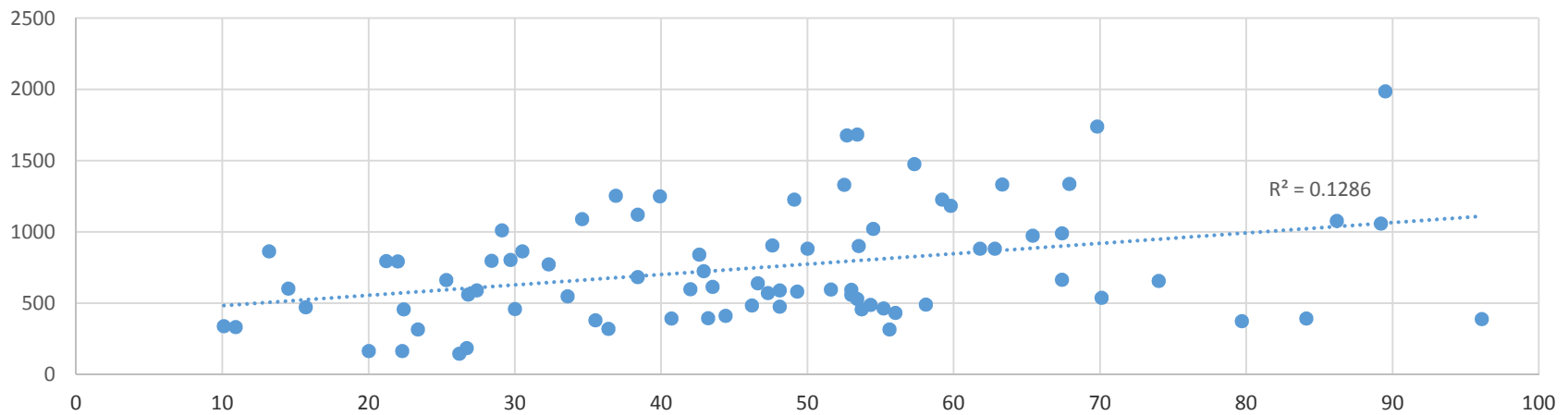
This conclusion is based off of government statistics from 2010 to 2014, excluding Honolulu.



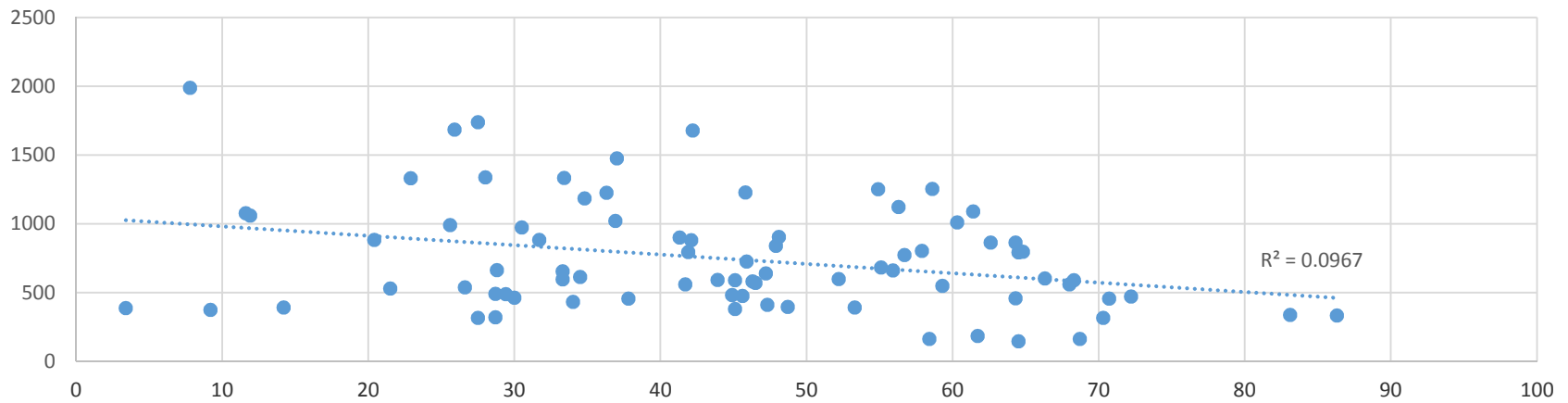
Population size vs violent crime rate



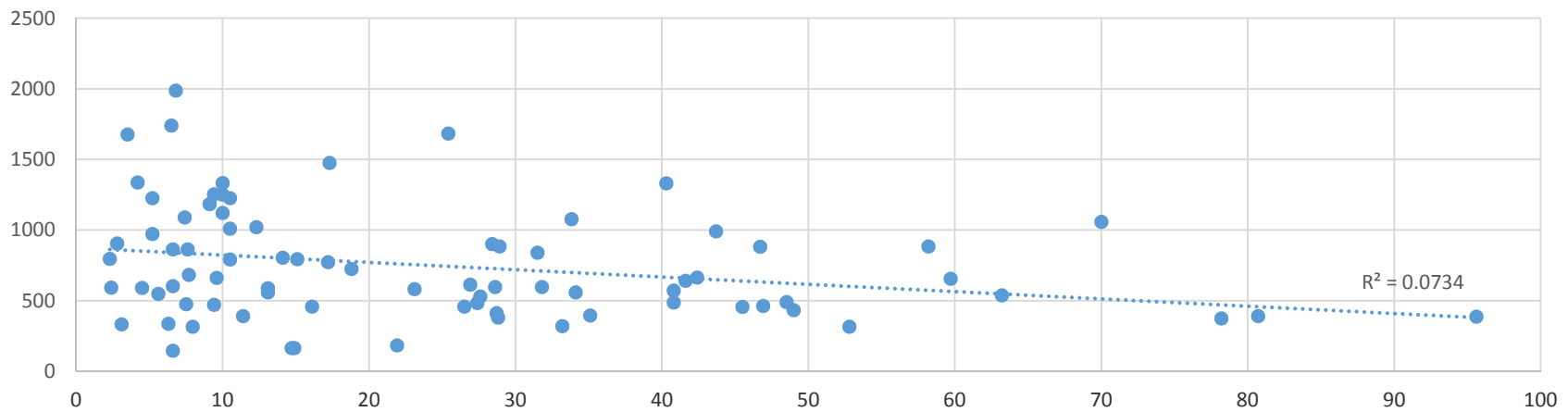
Population % black or Hispanic vs violent crime rate



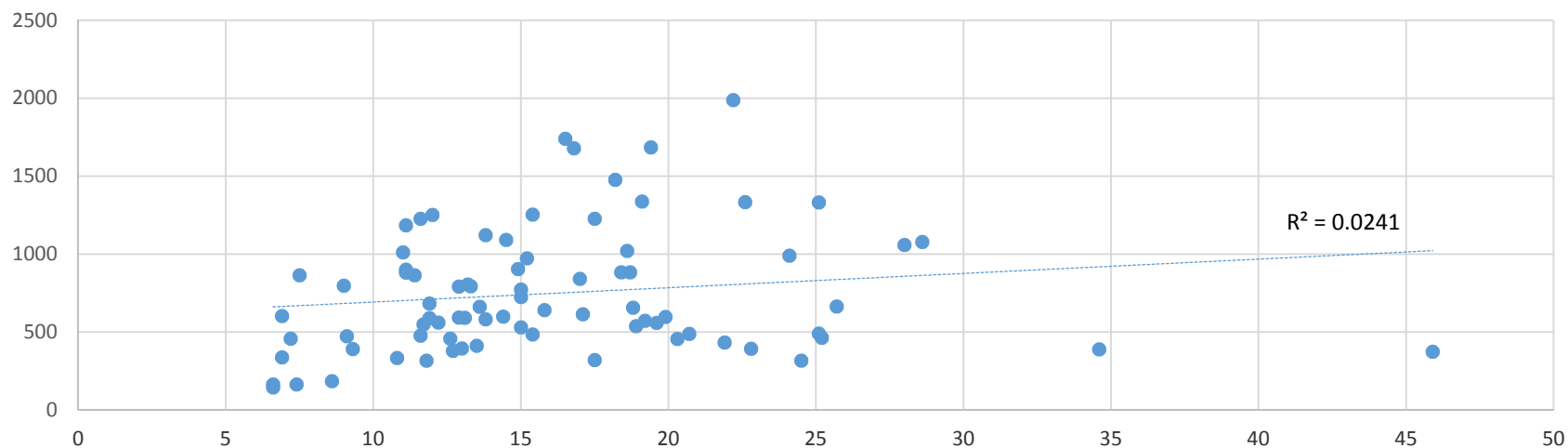
Population % white vs violent crime rate



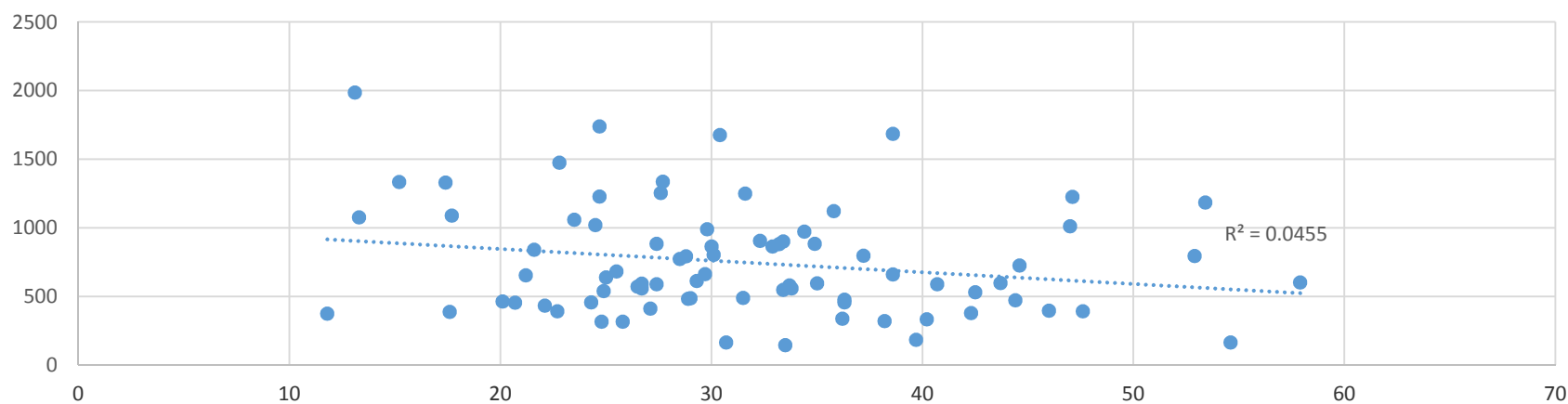
Population % Hispanic vs violent crime rate



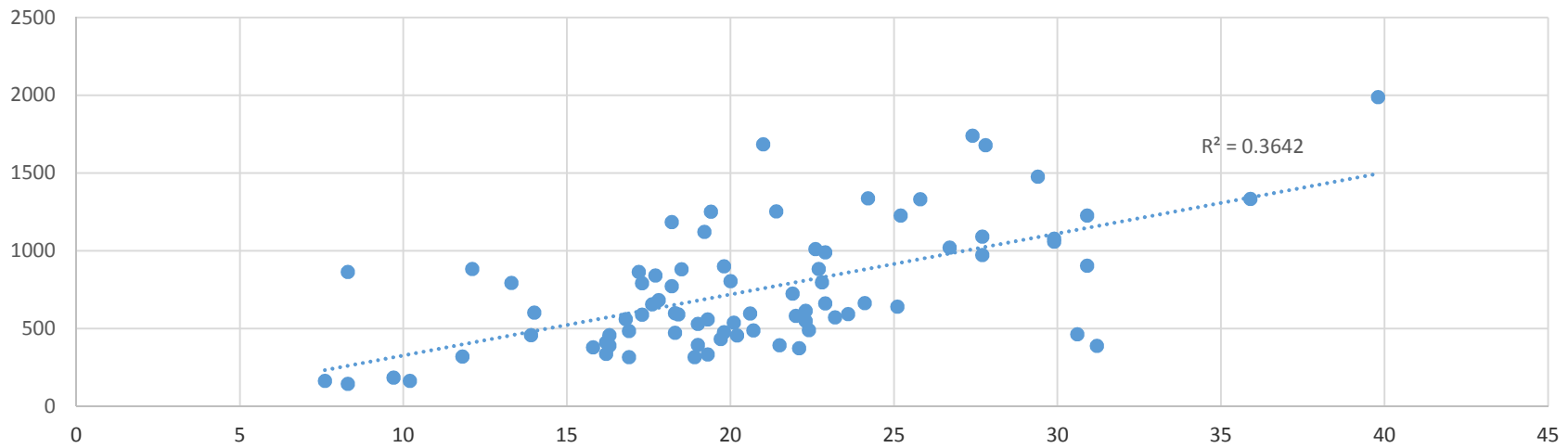
% of population 25+ not graduated highschool vs violent crime rate



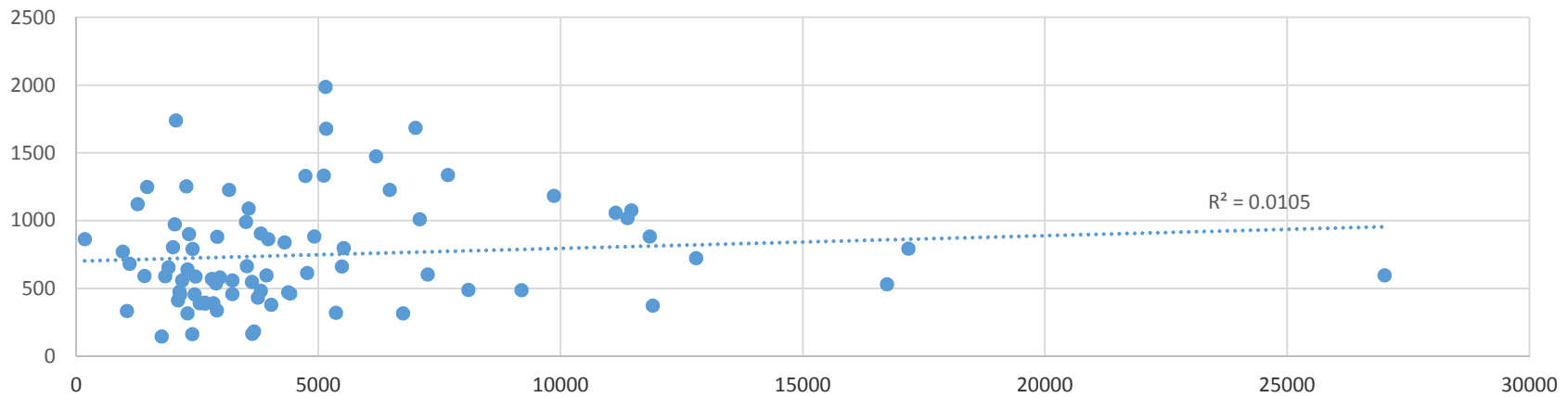
% of population 25+ with bachelor's degree or higher vs violent crime rate



% of population in poverty vs violent crime rate



Population per square mile vs violent crime rate



Raw data:

- 1 Rank by population
- 2 City name
- 3 State containing the city
- 4 Population in 2014 (source: <http://chicago.cbslocal.com/691526-2/>, <https://www.fbi.gov/about-us/cjis/ucr/crime-in-the-u.s/2014/crime-in-the-u.s.-2014/cius-home>)
- 5 Violent crimes per 100,000 people in 2014 (source: [https://en.wikipedia.org/wiki/List\\_of\\_United\\_States\\_cities\\_by\\_crime\\_rate\\_\(2014\)](https://en.wikipedia.org/wiki/List_of_United_States_cities_by_crime_rate_(2014)))
- 6 White % of city population in 2010 (source: <http://www.census.gov/quickfacts/table/PST045215/00>)
- 7 Black % of city population in 2010 (source: <http://www.census.gov/quickfacts/table/PST045215/00>)
- 8 Hispanic % of city population in 2010 (source: <http://www.census.gov/quickfacts/table/PST045215/00>)
- 9 Combined black and Hispanic % of city population in 2010
- 10 % of city population 25 years or older that has not graduated high school in 2010 (source: <http://www.census.gov/quickfacts/table/PST045215/00>)
- 11 % of city population 25 years or older with a bachelor's degree or higher in 2010 (source: <http://www.census.gov/quickfacts/table/PST045215/00>)
- 12 % of city population in poverty in 2010 (source: <http://www.census.gov/quickfacts/table/PST045215/00>)
- 13 Population per square mile in 2010 (source: <http://www.census.gov/quickfacts/table/PST045215/00>)
- 14 Unemployment rate for city's metropolitan area in November 2014 (source: [http://www.bls.gov/news.release/archives/metro\\_02042015.pdf](http://www.bls.gov/news.release/archives/metro_02042015.pdf)) (no unemployment statistics available for the city only)

1	2	3	4	5	6	7	8	9	10	11	12	13	14
1	New York	New York	8,473,938	596.7	33.3	23	28.6	51.6	19.9	35.0	20.6	27012.5	6.6
2	Los Angeles	California	3,906,772	490.7	28.7	9.6	48.5	58.1	25.1	31.5	22.4	8092.3	7.2
3	Chicago	Illinois	2,724,121	884.3	31.7	32.9	28.9	61.8	18.4	34.9	22.7	11841.8	5.8
4	Houston	Texas	2,219,933	991.4	25.6	23.7	43.7	67.4	24.1	29.8	22.9	3501.5	4.5
5	Philadelphia	Pennsylvania	1,559,062	1021.4	36.9	42.2	12.3	54.5	18.6	24.5	26.7	11379.5	5.2
6	Las Vegas	Nevada	1,530,899	841.1	47.9	11.1	31.5	42.6	17.0	21.6	17.7	4298.2	7.1
7	Phoenix	Arizona	1,529,852	571.9	46.5	6.5	40.8	47.3	19.2	26.5	23.2	2797.8	5.9
8	San Antonio	Texas	1,428,465	539.3	26.6	6.9	63.2	70.1	18.9	24.9	20.1	2879.8	4.3
9	San Diego	California	1,368,690	380.9	45.1	6.7	28.8	35.5	12.7	42.3	15.8	4020.4	5.8
10	Dallas	Texas	1,272,396	664.7	28.8	25	42.4	67.4	25.7	29.7	24.1	3517.6	4.6

11	San Jose	California	1,009,679	321.1	28.7	3.2	33.2	36.4	17.5	38.2	11.8	5358.7	5.2
12	Austin	Texas	903,924	396.2	48.7	8.1	35.1	43.2	13.0	46.0	19	2653.2	3.9
13	Indianapolis	Indiana	858,238	1254.7	58.6	27.5	9.4	36.9	15.4	27.6	21.4	2270	5.4
14	Charlotte-Mecklenburg	North Carolina	856,916	589.8	45.1	35	13.1	48.1	11.9	40.7	17.3	2457.1	5.5
15	Jacksonville	Florida	856,021	683.7	55.1	30.7	7.7	38.4	11.9	25.5	17.8	1100.1	5.4
16	San Francisco	California	850,294	795.1	41.9	6.1	15.1	21.2	13.3	52.9	13.3	17179.1	5
17	Columbus	Ohio	830,811	549.2	59.3	28	5.6	33.6	11.7	33.4	22.3	3624.1	3.7
18	Fort Worth	Texas	789,035	560.2	41.7	18.9	34.1	53	19.6	26.7	19.3	2181.2	4.6
19	Detroit	Michigan	684,694	1988.6	7.8	82.7	6.8	89.5	22.2	13.1	39.8	5144.3	7
20	El Paso	Texas	680,273	392.6	14.2	3.4	80.7	84.1	22.8	22.7	21.5	2543.2	6.4
21	Louisville	Kentucky	677,710	591	68.3	22.9	4.5	27.4	13.1	27.4	18.4	1836.6	5.5
22	Denver	Colorado	665,353	598.6	52.2	10.2	31.8	42	14.4	43.7	18.3	3922.6	3.9
23	Seattle	Washington	663,410	603.1	66.3	7.9	6.6	14.5	6.9	57.9	14	7250.9	5.1
24	Washington	District of Columbia	658,893	1185.3	34.8	50.7	9.1	59.8	11.1	53.4	18.2	9856.6	4.5
25	Memphis	Tennessee	654,922	1740.5	27.5	63.3	6.5	69.8	16.5	24.7	27.4	2053.3	7.6
26	Boston	Massachusetts	654,413	725.7	45.9	24.1	18.8	42.9	15.0	44.6	21.9	12792.7	4.7
27	Nashville	Tennessee	647,689	1122.5	56.3	28.4	10	38.4	13.8	35.8	19.2	1265.4	5
28	Baltimore	Maryland	623,513	1338.5	28	63.7	4.2	67.9	19.1	27.7	24.2	7671.5	5.5
29	Oklahoma City	Oklahoma	617,975	773.8	56.7	15.1	17.2	32.3	15.0	28.5	18.2	956.4	3.9
30	Portland	Oregon	615,672	472.8	72.2	6.3	9.4	15.7	9.1	44.4	18.3	4375.2	6.3
31	Milwaukee	Wisconsin	600,374	1476.4	37	40	17.3	57.3	18.2	22.8	29.4	6188.3	5.2
32	Albuquerque	New Mexico	558,874	882.8	42.1	3.3	46.7	50	11.1	33.2	18.5	2907.6	6.4
33	Tucson	Arizona	525,486	640.9	47.2	5	41.6	46.6	15.8	25.0	25.1	2294.2	6.3
34	Fresno	California	513,187	464.2	30	8.3	46.9	55.2	25.2	20.1	30.6	4418.3	11.2
35	Sacramento	California	482,767	614.8	34.5	16.6	26.9	43.5	17.1	29.3	22.3	4764.2	6.7
36	Long Beach	California	471,123	489	29.4	13.5	40.8	54.3	20.7	29.0	20.7	9191.3	7.2
37	Kansas City	Missouri	468,417	1251.4	54.9	29.9	10	39.9	12.0	31.6	19.4	1459.9	5
38	Mesa	Arizona	462,092	458.6	64.3	3.5	26.5	30	12.6	24.3	16.3	3217.5	5.9

39	Atlanta	Georgia	454,363	1227.4	36.3	54	5.2	59.2	11.6	47.1	25.2	3154.3	6.4
40	Virginia Beach	Virginia	451,102	146.3	64.5	19.6	6.6	26.2	6.6	33.5	8.3	1758.9	5
41	Colorado Springs	Colorado	444,949	458.3	70.7	6.3	16.1	22.4	7.2	36.3	13.9	2140.6	5.1
42	Omaha	Nebraska	438,465	560.6	68	13.7	13.1	26.8	12.2	33.8	16.8	3217.9	2.9
43	Raleigh	North Carolina	428,993	392.3	53.3	29.3	11.4	40.7	9.3	47.6	16.3	2826.3	4.3
44	Miami	Florida	421,996	1060	11.9	19.2	70	89.2	28.0	23.5	29.9	11135.9	5.5
45	Oakland	California	409,994	1685.4	25.9	28	25.4	53.4	19.4	38.6	21	7004	5
46	Minneapolis	Minnesota	404,461	1012	60.3	18.6	10.5	29.1	11.0	47.0	22.6	7088.3	3
47	Tulsa	Oklahoma	399,556	805.1	57.9	15.6	14.1	29.7	13.2	30.1	20	1991.9	4.4
48	Cleveland	Ohio	388,655	1334.3	33.4	53.3	10	63.3	22.6	15.2	35.9	5107.2	5.4
49	New Orleans	Louisiana	387,113	973.9	30.5	60.2	5.2	65.4	15.2	34.4	27.7	2029.4	6.4
50	Wichita	Kansas	386,486	793	64.5	11.5	10.5	22	12.9	28.8	17.3	2400.4	4.7
51	Arlington	Texas	382,976	484.1	44.9	18.8	27.4	46.2	15.4	28.9	16.9	3811.3	4.6
52	Bakersfield	California	367,406	456.7	37.8	8.2	45.5	53.7	20.3	20.7	20.2	2444.2	9.6
53	Tampa	Florida	357,124	582.4	46.3	26.2	23.1	49.3	13.8	33.7	22	2960.2	5.9
54	Aurora	Colorado	350,948	412.6	47.3	15.7	28.7	44.4	13.5	27.1	16.2	2100.9	3.9
55	Anaheim	California	346,956	317.3	27.5	2.8	52.8	55.6	24.5	24.8	16.9	6747.6	7.2
56	Santa Ana	California	336,462	374.5	9.2	1.5	78.2	79.7	45.9	11.8	22.1	11900.6	7.2
57	Riverside	California	319,453	433.2	34	7	49	56	21.9	22.1	19.7	3745	8
58	Corpus Christi	Texas	319,211	656	33.3	14.3	59.7	74	18.8	21.2	17.6	1900.3	4.7
59	St. Louis	Missouri	318,574	1678.7	42.2	49.2	3.5	52.7	16.8	30.4	27.8	5157.5	5.6
60	Lexington	Kentucky	311,848	333.8	86.3	7.8	3.1	10.9	10.8	40.2	19.3	1042.8	4.9
61	Pittsburgh	Pennsylvania	307,613	798.1	64.8	26.1	2.3	28.4	9.0	37.2	22.8	5521.4	4.3
62	Anchorage	Alaska	301,306	864.6	62.6	5.6	7.6	13.2	7.5	32.9	8.3	171.2	5.2
63	Stockton	California	299,519	1331.5	22.9	12.2	40.3	52.5	25.1	17.4	25.8	4730.1	10.7
64	St. Paul	Minnesota	297,984	662.5	55.9	15.7	9.6	25.3	13.6	38.6	22.9	5484.3	3
65	Cincinnati	Ohio	297,671	905.4	48.1	44.8	2.8	47.6	14.9	32.3	30.9	3809.8	4.3
66	Greensboro	North Carolina	282,203	477	45.6	40.6	7.5	48.1	11.6	36.3	19.8	2131.5	5.5



67	Toledo	Ohio	281,150	1091.2	61.4	27.2	7.4	34.6	14.5	17.7	27.7	3559.3	4.8
68	Newark	New Jersey	279,110	1077.7	11.6	52.35	33.83	86.18	28.6	13.3	29.9	11458.2	5.8
69	Plano	Texas	277,822	165.2	58.4	7.6	14.7	22.3	6.6	54.6	7.6	3630	4.6
70	Henderson	Nevada	274,121	164.9	68.7	5.1	14.9	20	7.4	30.7	10.2	2392.3	7.1
71	Lincoln	Nebraska	271,208	338.5	83.1	3.8	6.3	10.1	6.9	36.2	16.2	2899.4	2.1
72	Jersey City	New Jersey	260,005	531.1	21.5	25.8	27.6	53.4	15.0	42.5	19	16736.3	5.8
73	Chula Vista	California	259,894	884.3	20.4	4.6	58.2	62.8	18.7	27.4	12.1	4914.6	5.8
74	Orlando	Florida	259,675	901.1	41.3	25.1	28.4	53.5	11.1	33.4	19.8	2327.3	5.3
75	Buffalo	New York	258,419	1228.2	45.8	38.6	10.5	49.1	17.5	24.7	30.9	6470.6	5.8
76	Fort Wayne	Indiana	257,172	317.3	70.3	15.41	7.96	23.37	11.8	25.8	18.9	2293.4	5.3
77	Chandler	Arizona	252,369	184.7	61.7	4.8	21.9	26.7	8.6	39.7	9.7	3665.8	5.9
78	Laredo	Texas	250,994	388.9	3.4	0.5	95.6	96.1	34.6	17.6	31.2	2655.5	4.9
79	St. Petersburg	Florida	250,772	864.9	64.3	23.9	6.6	30.5	11.4	30.0	17.2	3964.4	5.9
80	Mobile	Alabama	250,655	593.6	43.9	50.6	2.4	53	12.9	26.7	23.6	1402.6	6.4