

# Kmjt's Mass Goldfarming Guide

Copyright © 2011, Kmjt

## Table of Contents

What is a Bot Farm? (2)

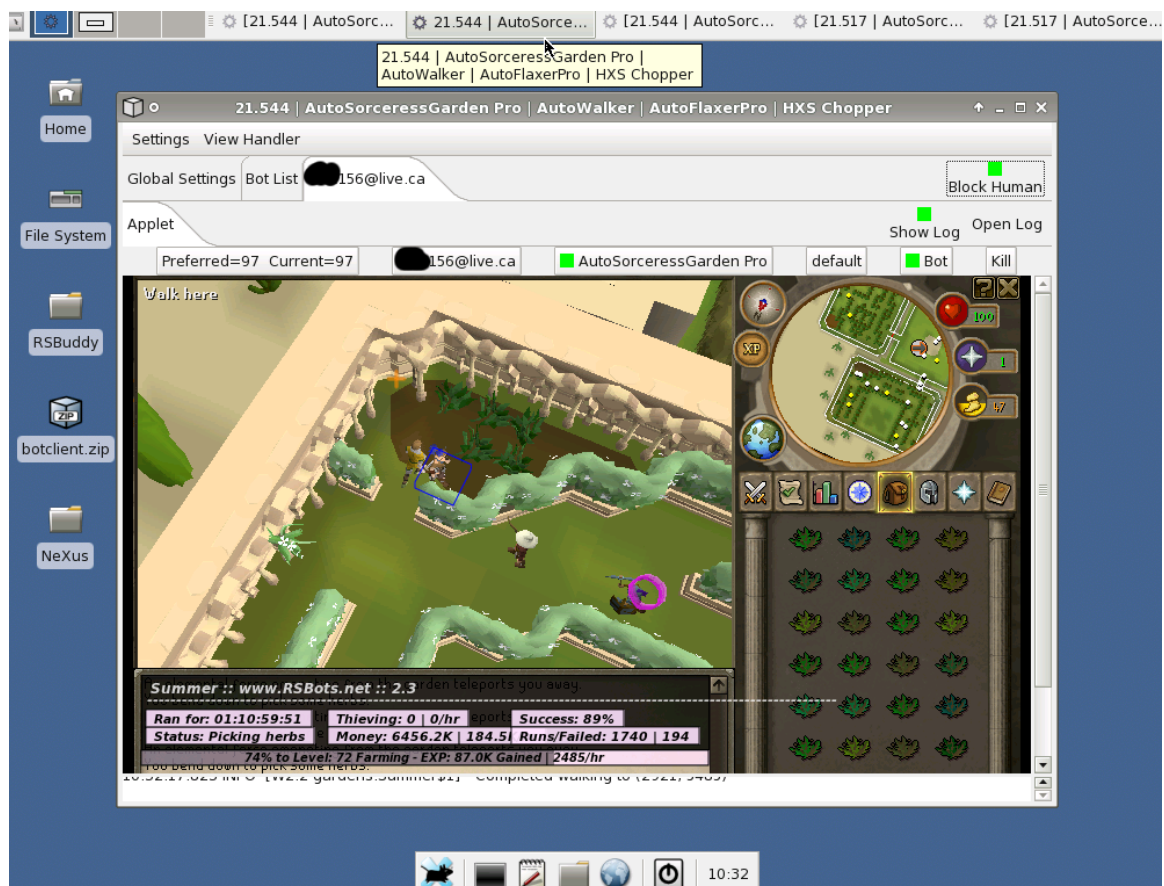
What is a VPS / Server? (3-8)

Introduction to Goldfarming and Calculations (9-12)

Plan in Action (13-21)

Setting Up Your Own Vps / Server (22-29)

The Risks and How to Avoid Them (30-35)



# *What is a Bot Farm?*

A “**bot farm**” is generally used in Runescape to mass goldfarm. “Mass **goldfarming**” is the act of collecting mass amounts of GP from botting to profit in the real world by selling it. If you run multiple bots on your computer you actually have your mini bot farm running right now, and you might not know it! Of course in this guide I will demonstrate how to set up, run and maintain a massive bot farm (100+ bots at a time.)

Mass goldfarming can be accomplished on just one computer/laptop if you have knowledge with VPS / Servers (which I will teach you about later in this guide.) Now that you have a general idea what a bot farm and goldfarming is, I will show you how profitable it can be from personal experience.

# *What is a VPS / Server*



If you browse a Runescape cheating forum there is a good chance you have heard someone mentioning a **VPS** when it comes to botting. What exactly is a VPS? For the sake of simplicity all you need to know is to think of it as a virtual computer. *It is a computer somewhere else in the world that is turned on 24/7.*

**VPS:** Virtual Private Server

When you think your own computer is at its bot limit (bots are starting to crash / not work properly) it is probably time for you to invest in a VPS (or server.) Of course VPS' aren't free. In reality, businesses / companies sell VPS to

profit. There aren't many VPS out there that will actually allow you to bot Runescape, so do your research and make sure you know if a VPS allows botting or not before ordering it!

### Photonvps



### Seerhost



As of June 2011, in my opinion these are the two best VPS providers that **ALLOW** Runescape botting. Be careful when selecting your VPS package as there are many. Ask on a forum which is best for botting Runescape. For **Photonvps**, make sure to pick an Xen package. Each package basically defines how many bots the VPS will be able to run. Generally if a package is more expensive it will be able to run more bots. If you try to run too many bots

on a VPS it will freeze up, but don't worry you can reset your VPS (just like rebooting a computer.)

Typically the Warp 3 Xen package from Photonvps can run 3-5 bots. So you are investing \$41.95 to run 5 bots 24/7 for a month. This means that if you run 5 bots, each bot would need to make \$8.39/month in terms of GP sales for this VPS investment to be worthwhile. As of June 2011 Runescape GP is worth approximately \$0.60/million (m).

$\$8.39 / \$0.60 = \text{approximately } 14\text{m}$

Therefore each of your bots would need to make approximately 14m Runescape GP a month to be worthwhile. This figure is not at all hard to accomplish if you know what to bot. I will get more into calculations later in this guide.

A major con of investing in a VPS is that the provider of the VPS can **oversell** their nodes. A VPS is basically a place (or a node) on a server. A server is the big picture.

**Server:** The big picture. Split into multiple VPS' by VPS providers.

**VPS:** A small portion (or node) of a server.

To clarify what overselling a VPS is, I will explain it a little. VPS providers generally buy servers in bulk for a cheaper price than normal. They then split these servers in to multiple IPs (VPS). They sell these VPS to customers like us. Here is the thing: They have complete control on how they split up the resources of their server. For example, if a server has 8GB of ram in total, the VPS provider may choose to split up the server in to 8 VPS consisting of 1GB ram each. If the VPS provider wants to oversell (and profit more) they can oversell and split this server in to more then 8 VPS, meaning the ram per server is actually less than 1GB. Most VPS providers will still list that they are selling you a VPS with 1GB ram when really they are not. If you haven't already guessed it, ram is an important resource when it comes to how many bots your VPS can run.

**So why settle for a VPS when you can just get the server? Well, servers are generally a lot more expensive. Personally I use servers because..**

- You have total control over your server's resources (no getting jipped on overselling VPS providers.)**
- Server companies are generally more professional therefore will give you much better customer support than a VPS provider.**
- Servers are more stable then VPS most of the time (less bot client crashes.)**
- If you really wanted to, you could split your server up in to your own VPS and bot on even more IPs.**



**I personally use servers from serverloft, which I will explain later in this guide. As I said, I run 120 bots. I can't afford poor quality VPS because that just means more time maintaining bots. As it is, I already spend a large amount of time maintaining bots since I have so many running.**



# *Introduction to Goldfarming and Calculations*

**You now know that goldfarming is the act of collecting a massive amount of Runescape GP. We do this by running a massive amount of bots. But exactly how much can be made in terms of real world profit by doing this? I will now give you an idea of my potential profit a few months ago (January 2011) running 120 sorc garden bots.**

**I'm not going to stand here and tell you that to make what I was potentially making you need nothing to start. You need money to make money. You will need to **INVEST**. By investing, you are putting your own money into something that could potentially make you more money. There are risks with most investments (which I will explain later in this guide.)**

**Lets start with my initial investments..**

**30 x Sorceress Garden Auths (\$15.95) =  
\$478.50**

**Since this is just a one-time investment I will not include it in my monthly investments, since I am done with this initial investment after my first month. Just know that this is an initial investment.**

**Now we list the monthly investments I had..**

**10 x Serverloft 8GB Servers (\$119) = \$1190  
120 x Runescape Membership (\$3) = \$360**

**Note: I got my memberships for \$3 because I actually bought them for 6m Runescape GP per. At the time, I was buying the Runescape GP to pay for the memberships for \$0.5/m, therefore  $6m / \$0.5 = \$3$ .**

**TOTAL MONTHLY INVESTMENTS  
= \$1190 + \$360  
= \$1550**

**So I was investing \$1550 total a month. This may sound a lot, but to make money you need**

to invest money. Here is what I was potentially making at the time:

Note: 1 sorc garden bot at the time made 250k/hour = 6m/day

$$120 \times 6m = 720m$$

And at the time I was selling my Runescape GP online for \$1.4/m.

$$720m \times \$1.4 = \$1,008$$

Yes you read that right. That's \$1,008 a day, which is \$31,248 a month. Of course that's assuming no Runescape downtime and everything ran smoothly. Keep in mind at that time there were literally no bans there. Now we still need to subtract my monthly investments..

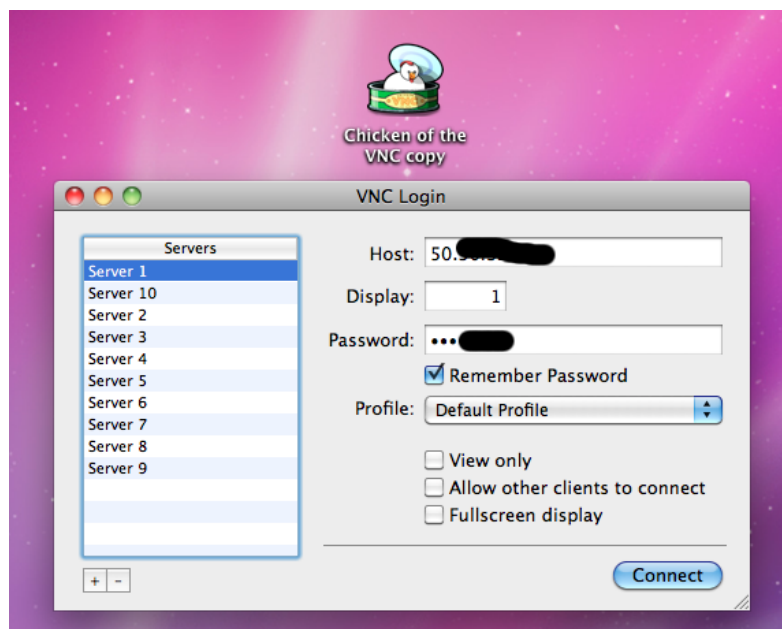
$$\$31,248 - \$1550 = \$29,698$$

Yes that is the profit. Better than a part time job I'd say. Heck, probably better than most full time jobs after university..

**Now that you have seen how the calculations work you can calculate your own daily and monthly profits. Just remember to subtract your monthly investments from your money in to get your profit.**

# *My Plan in Action*

At the beginning of my day I would log in to check on each of my servers and make sure none of them are stuck in randoms, banned or just have a low success rate/performing poorly. I logged in from my vnc viewer (which just means vps viewer) through Chicken of the VNC. It is a mac product, since I did this all from my macbook. Here is me logging in on one of my ten servers from serverloft. Make sure to number each of them so you remember what each server represents.



**I can't emphasize enough how important it is to KEEP ORGANIZED! Running a massive amount of bots can be very time consuming and frustrating if you don't know exactly what you have to do before entering one of your servers. For the sake of organization I will show you how I kept organized. I made myself a simple document in excel that contained information for each of my servers.**

REAL SERVER BOTS (version 1).xlsb				
New Open Save Print Import Copy Paste Format Undo Redo AutoSum Sort A-Z Sort Z-A Gallery Toolbox				
Sheets Charts SmartArt Graphics WordArt				
A B C D				
1	USERNAME	LEVEL	MEMBERS EXPIRES	CHECKED
2	[REDACTED]	65	June 16 2011	May 31 2011
3	[REDACTED]	65	June 17 2011	May 31 2011
4	[REDACTED]	65	June 23 2011	May 31 2011
5	[REDACTED]	65	June 12 2011	May 31 2011
6	[REDACTED]	65	June 17 2011	May 31 2011
7				
8	[REDACTED]	78	May 30 2011	
9	[REDACTED]	77		
10	[REDACTED]	76		
11	[REDACTED]	78		
12	[REDACTED]	78		
13	[REDACTED]	73		
14	[REDACTED]			
15	[REDACTED]	65		
16				
17	[REDACTED]	10	June 1 2011	
18	[REDACTED]	10	June 4 2011	
19	[REDACTED]	10	June 4 2011	
20	[REDACTED]	10	June 4 2011	
21	[REDACTED]	10	June 4 2011	
22	[REDACTED]	10	June 8 2011	
23				
24	BANNED ACCOUNTS	BANNED ON	TYPE	
25	[REDACTED]	May 25 2011		14
26	[REDACTED]	May 26 2011		14
27	[REDACTED]	May 25 2011		14
28	[REDACTED]	May 28 2011		14
29	[REDACTED]	May 25 2011		14
30	[REDACTED]	May 25 2011		14
31	[REDACTED]	May 25 2011		21
32	[REDACTED]	May 25 2011		14
33	[REDACTED]	May 25 2011		14
34				
35	SORC AUTHS			
36	624x [REDACTED]			
37	624x [REDACTED]			
38	624x [REDACTED]			
39				
40	WC AUTHS			
41	81x [REDACTED]			
42				
43	FLAX AUTHS			
44	39x [REDACTED]			
45	39x [REDACTED]			
46				
47	PLANK AUTHS			
48	485x [REDACTED]			
49				

USERNAME	LEVEL	MEMBERS EXPIRES	CHECKED
BANNED ACCOUNTS	BANNED ON		
SORC AUTHS			
WC AUTHS			



First I will explain everything circled in red..

**USERNAME:** It is important to keep track of which of your accounts are on what server. If you fail to do this and you log in to one of your servers on an account that shouldn't be botting there, you risk getting that account locked for multiple IP suspicion.

**LEVEL:** Pretty self-explanatory. This is usually more important up until 65 when you are still training thieving in the lower level gardens. This helps you keep track of which accounts are in which garden.

**MEMBERS EXPIRES:** This is very important so you don't accidentally have an account run out of membership before you sell off your herbs, as herbs can not be sold in non members and it will basically become lost profit if you don't renew membership on that account. Personally I choose to throw away an account after the membership expires and sell it off for extra profit.

**CHECKED:** This notes the last time I sold the herbs from this account in the grand exchange. I have a five-day rule which means I don't sell more than once every five days to avoid RWT suspicion, which I will explain later in this guide. And let's be honest.. you wouldn't want to sell herbs every day on 120 different bots. I use a rotation where I sell my herbs on a 2-5 rotation. By that I mean I sell my herbs on 2 servers each day, then do the next 2 servers the next day and so on. Since I have 10 servers total, this makes it so I clear herbs every 5 days.

Now I will explain everything circled in green..

**BANNED ACCOUNTS:** An unfortunate area we must include in our workbook. When an account gets banned, take it off of the **USERNAME** column and put it under here.

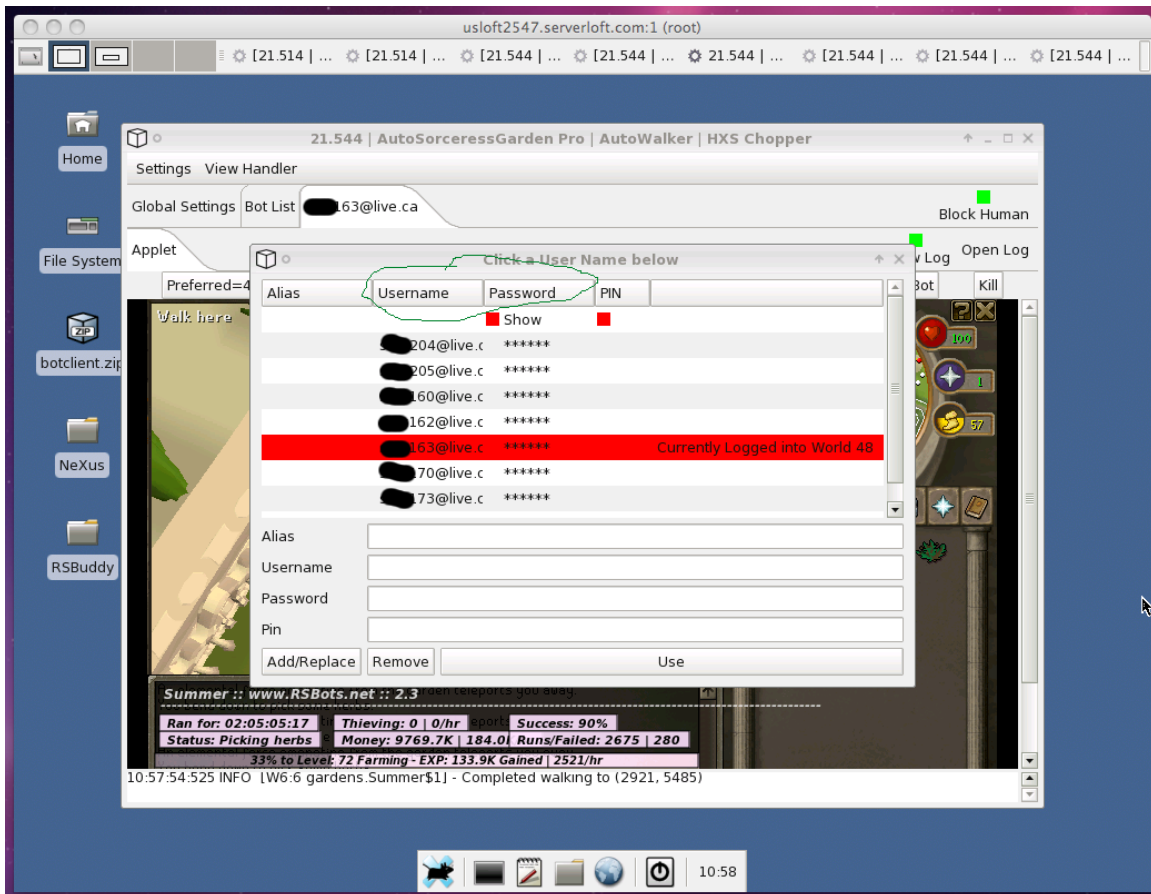
**BANNED ON / TYPE:** Keeping information on when the account was banned and how long the account is banned for will let you know when exactly you can get your bot back up and running in the game. Remember, when Jagex bans you they DO NOT charge you membership

days during those banned days. This means if you were given a 14-day ban with 2 days of membership credit remaining, at the end of your 14-day ban you will still have those 2 days of membership remaining. Also note that after a ban you will always have your thieving rolled back in to the high 50s or low 60s, so you will need to spend a few hours getting it back to 65 before putting it back in summer garden.

**SORC AUTHS:** I like to keep track of where all of my auths are located. I have 10 servers and 30 sorc garden auths total, therefore I will have 3 sorc auths allocated per server. Keep in mind I do on occasion bot stuff other then sorc garden which is why you see other auths and accounts.

Now we'll take an actual look inside of one of my servers. Keep in mind I just got hit by a mass ban so I am running an 8-1 set up. By 8-1 I mean I have 8 bots running on the server in 8 separate bot clients. When I am using my servers optimally I will run a 4-3 set up, which means 4 bot clients running 3 sorc garden bots each. This is why I have 3 sorc garden auths

per server.. because you need 3 auths in one bot client to run 3 sorc garden bots on that one bot client. It is a wise investment to get more auths; the less bot clients open, the less resources used up on your server = more bots can be run.



Notice how the passwords are all the same length? That is because they are all exactly the same thing. Trust me.. if you are running a lot of bots you are going to want to use the same

password for all of them. This also helps if you have to ever log in quickly to maintain a bot. Since I use a server from a multimillionaire company its safe to say they aren't going to hack my Runescape accounts, so I have a very little chance of having someone else log on to my accounts. Think about it.. all I am doing on my server is botting. You shouldn't be surfing the web on your server or VPS. Your accounts are almost 100% safe assuming your bot client doesn't stab you in the back. Having the same password also saves a lot of time when you are adding new bots to the bot client since it saves the previous password you entered.

The second thing I want you to notice is how my usernames are numbered. For the sake of simplicity you will want all of your login emails to be in the same series. For example, someone may have a series like this:

Botsorc1@live.ca

Botsorc2@live.ca

...

It will be easier to keep track of them this way. The smaller the login the better.

# *Setting Up Your Own VPS / Server*

**The first thing you must do is research. At any given time a certain VPS may be better than its competitors, and the same thing goes for servers. Find out which VPS is the best for Runescape botting. Photonvps and Seerhost may not always be the best. There may be new VPS providers that come out that are better, so stay on top of it. Choosing the best VPS or server is important because it defines most of your monthly investment money. If a VPS can get you more bots running for a cheaper price, it increases your profits. However, if a VPS sounds too good to be true it probably is. Don't order from shady providers because you will most likely get downtime from them. When you get downtime, your bots aren't running and that is lost profit.**

Once you order your VPS and get the email with the set up details it is time to take certain steps to actually set up your VPS/server. The following an example of how to set up a VPS/server on a mac, however the instructions are almost identical for windows.

#### New Dedicated Server Information

[Back to messages](#)



PhotonVPS [Add to contacts](#)  
To [REDACTED]

13/03/2011

[Reply](#)



[REDACTED]

**PLEASE PRINT THIS MESSAGE FOR YOUR RECORDS - PLEASE READ THIS EMAIL IN FULL.**

We are pleased to tell you that the server you ordered has now been set up and is operational.

##### Server Details

=====

Warp 2

Main IP: 173.[REDACTED].208.[REDACTED]

Username: root

Root pass: [REDACTED]

IP address allocation:

[REDACTED]

ServerName: vps.km[REDACTED].com

##### SolusVM Control Panel

=====

URL - [http://manage.unixbsd.info:5\[REDACTED\]](http://manage.unixbsd.info:5[REDACTED])

Login - [REDACTED]

Password - [REDACTED]

Email - [REDACTED]

If you have multiple VPS with us, please open a ticket and we can get them merged onto one account.

**This is the email I got from Photonvps when I ordered a VPS from them before. It includes all of the details you will need to set your VPS up.**

**First I'd like to note what I circled in green. This is your login detail to your control panel. In the control panel is where you would reboot your VPS if anything goes wrong such as it getting frozen.**

Open Terminal (Applications -> Utilities Folder)

In Terminal type **ssh -l [username] [ip address (Main IP)]** and press enter. When you type it in don't include the square brackets. There are spaces between ssh, -l, your username, and your ip address. What I circled in red in the picture on the previous page is your information for username and ip address. Note your username will always be "root" and the Main IP is the ip you put for the ip address.

After pressing enter this message should appear:

**The authenticity of host '(some random numbers and letters)' can't be established.  
RSA key fingerprint is (some random numbers and letters).  
Are you sure you want to continue connecting (yes/no)?**

Type in **yes** and press enter.

After pressing enter this message should appear:

**Warning: Permanently added (ip) (RSA) to the list of known hosts.  
Connection closed by (ip)**

Now reenter **ssh -l [username] [ip address (Main IP)]** (without square brackets) and press enter, with a space in between each thing.

After pressing enter this message should appear:

**root@(your ip)'s password:**



Also circled in red is your root pass. Type in the “Root pass” as the password and press enter (when you type it, it won’t appear don’t worry.)

After pressing enter this message should appear:

**[root@vps ~]#**

Now type the following commands (one by one) and press enter. Make sure to let each one fully install before entering another. To know one is installed, **[root@vps ~]#** will show.

- **yum -y install nano**
- **yum -y install firefox**
- **yum -y install java**
- **yum -y install unzip**
- **yum -y install vnc-server**
- **yum -y groupinstall “XFCE-4.4”**

Now enter the following three commands (one by one):

- **vncserver** (Will ask you to enter a password.. a password you need to remember to log into your vnc viewer.)
- **vncserver -kill :1**
- **nano /root/.vnc/xstartup**

After entering the last command and pressing enter, you will be in “nano” mode. Change the bottom text **twm &** to **startxfce4 &**

Once you have done this, press **control+x**

You will be asked whether you want to save something; press **y** for Yes.

Near the bottom you should now see white text in a black box that says something along the lines of **File Name to Write: /root/.vnc/xstartup**

Press Enter.

Enter **vncserver** into the terminal and press enter. You should see a message like:

**New 'vps.kmjt1.com:1 (root)' desktop is vps.kmjt1.com:1**

**Starting applications specified in /root/.vnc/xstartup**  
**Log file is /root/.vnc/vps.kmjt1.com:1.log**

This means the vps is installed now.

Open up Chicken of the VNC, or your vnc viewer if you have windows.

For the Host enter the Main IP.

Keep Display as 1.

Enter the password you set.

Hit Connect.

Now in the vps click on the internet icon at the bottom in the dock to open up firefox.

Go here to download the client: <http://www.rsbots.net/download/>

Save it to the desktop.

Open up the terminal (black square on dock) and type in the following commands 1 by 1:

- cd Desktop
- unzip botclient -d NeXus

Open up Nexus folder and find the program called **install-mac-linux.sh**

Right click it and choose Open with>MousePad. Right after java type in **-Xmx100**

Include a space before and after **-Xmx100**

Save it and close it.

Right click install-mac-linux.sh again and choose properties. Click the permissions tab and select the box "Allow this file to run as a program"

Close it.

Now double click install-mac-linux.sh and choose Linux GTK 64bit M3 as the Operating System.

Click Install.

Open up Nexus folder and find the program called **Run-linux.sh**

Right click it and choose Open with>MousePad. Right after java type in **-Xmx472**

Keep in mind “472” is the proper number to use when running 1 bot per client only. If you want to run 3 bots per client like I did make sure to put this number at at least 1000.

Include a space before and after **-Xmx472**

Save it and close it.

## **To Install RS Buddy on your VPS/Server:**

Open up your terminal and enter all of these commands into it, one by one. Press enter and wait a bit after you enter each command.

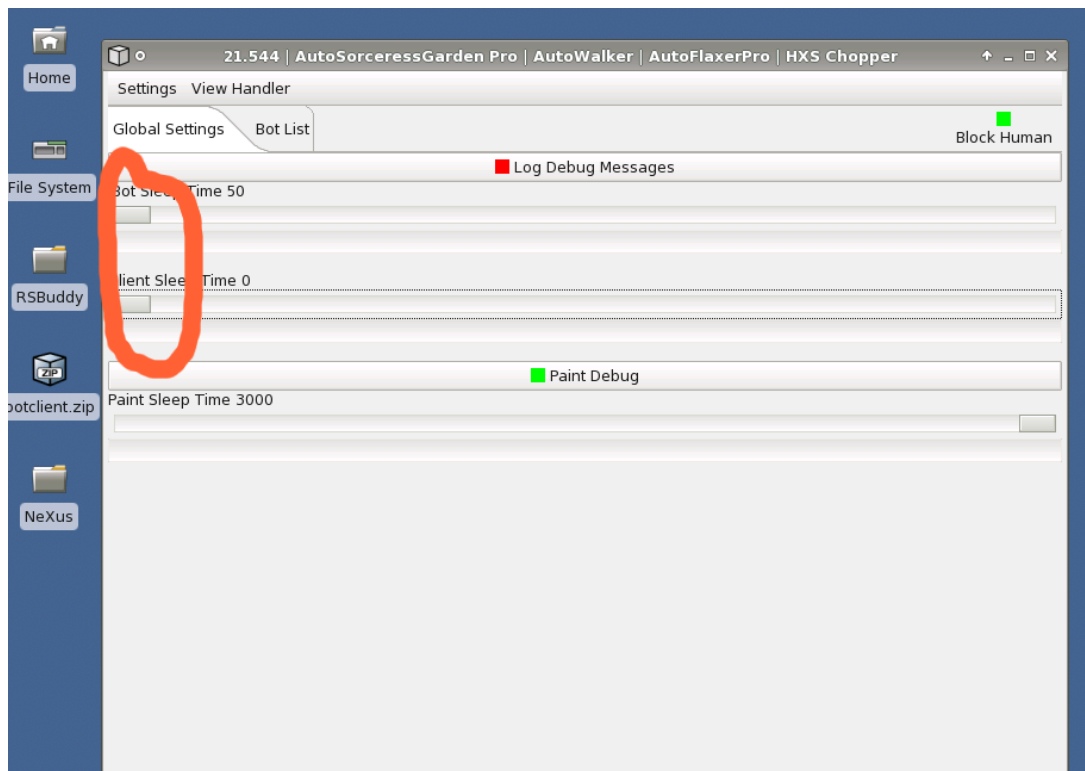
```
mkdir -p /root/Desktop/RSBuddy  
cd /root/Desktop/RSBuddy  
wget http://static.rs Buddy.com/RSBuddy.jar -O RSBuddy.jar  
wget vps4rs.co.uk/rsbuddy/Run.sh  
wget vps4rs.co.uk/rsbuddy/Update.sh  
chmod +x Update.sh  
chmod +x Run.sh
```

**Now your VPS/server is completely set up and its time to log in to your actual bot client and start setting up your bots. To open the bot client double click on Run-linux.sh.**

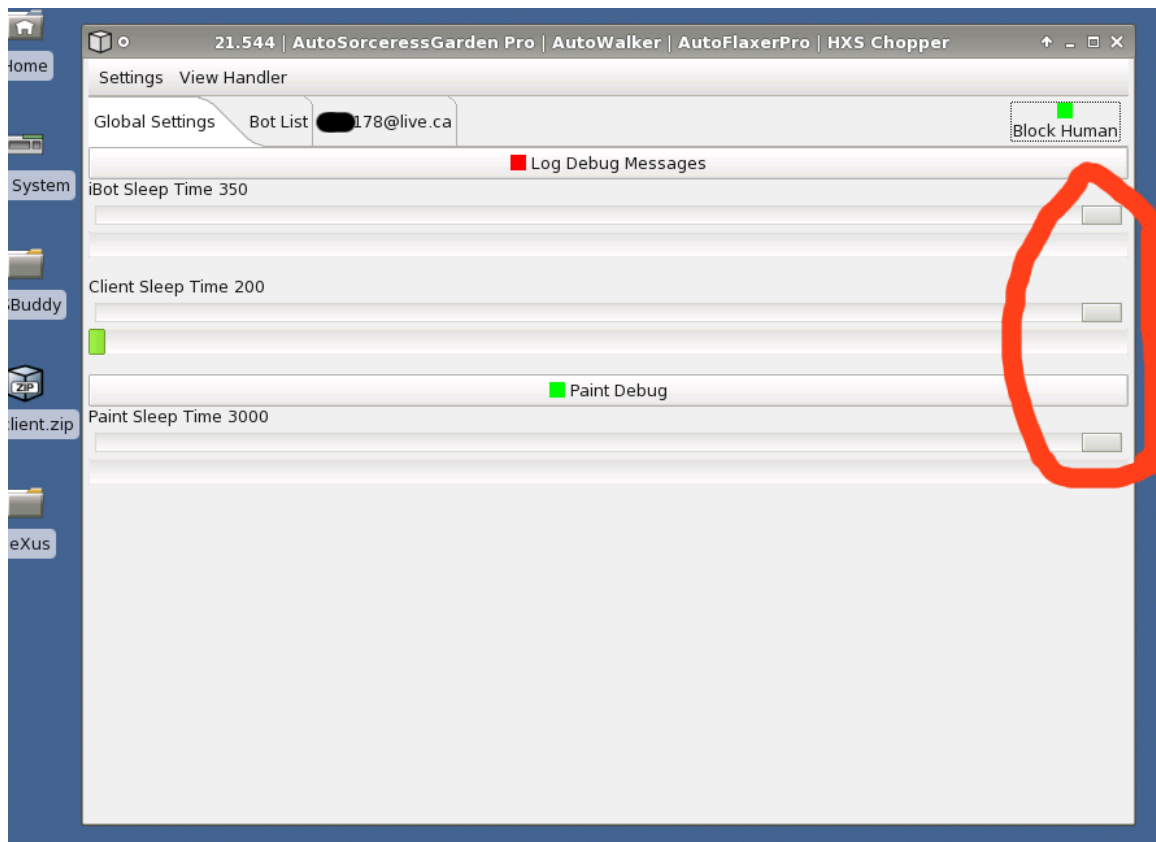
**NEVER SET A TEST QUESTION! It will just get annoying after awhile and is completely useless to do so. Press OK and let it load.**

**Sometimes an update happens to the bot client. In this case, click OK on both screens prompting you and then in your bot client folder double click on install-mac-linux.sh. Press Install now as it should already have the correct option chosen. Now reload the bot client and proceed to botting.**

**You will notice there are 3 sliders that can be adjusted. In order for Runescape to load quickly the first two sliders must be all the way to the left:**




**After Runescape is done loading you must put all 3 sliders all the way to the RIGHT. This makes it so the bots use fewer resources (ram etc.) When a bot uses less resources, more bots can be used on the VPS/server:**



**Once all of your bots are up and running, minimize all of the screens and exit out of your VPS/server and let them do work. Repeat this for each VPS / server you have.**


# The Risks And How to Avoid Them

So now it is time to sell herbs (or whatever you were botting) and collect the gold. In turn we will transfer that gold over to a mule (an account that stores the gold) where we will eventually sell it to other players. This is where you can't get sloppy. My personal friend had 40 out of his 40 sorc garden bots permanently banned because he was sloppy in his ways of transferring gold to his mule:



logged in

[RuneScape Home](#) | [Logout](#)



Offence History

[View Rules of Conduct](#)

Ban




Danger!

Warning

Safe

This pillar is in the **red zone**. The red zone indicates that you have a dangerous amount of offences in this pillar and that any further offences could result in a permanent ban.

Mute



Danger!

Warning

Safe

This pillar is in the **green zone**. You currently have no offences in the pillar. If you continue to abide by the rules, you will not receive any mutes.

Account Status

**Banned:** Due to the high level of offences you have committed, your account has been permanently banned.

Your account is in the **red zone**. You have a large amount of offences on your account and as a result you are now permanently banned. You may be able to appeal some or all of the offences in your offence history. Look at the list of offences below, and click on 'Appeal'. To read the Rules of Conduct, [click here](#).

All Offences


Date	Rule	Offence	Type	Site	Expires	Status	Action	Evidence
14-Apr-2011	<a href="#">Real World Trading</a>	Real World Trading Major	Ban	RuneScape	N/A	Appealable	<a href="#">Appeal</a>	<a href="#">View</a>

**He got caught because Jagex was able to trace all of the accounts together and mass ban them. First he would sell his herbs in the Grand Exchange for gold. Next he would trade all of the gold to one account. Forty separate trades to one account.. that is where his biggest mistake was. You will most certainly get caught if you trade a mule a high number of times like he did. For the record, his mule was also permanently banned for RWT.**

**Personally I suggest creating multiple mules for each VPS/server. Trade your mules a MAXIMUM of 4 times. So a mule will only get traded gold from 4 different sorc garden bot accounts. Also make sure that your mule is on the same IP (your VPS/server) as your bots are.**


**Be aware that you WILL eventually get RWT bans. It is unavoidable. However these bans don't usually come for 4 months or more. And since I only use my accounts for 1 month then ditch, it doesn't affect me. Notice how this is a different RWT ban (Goldfarmer.) Unlike my friend's ban, these bans happen but it takes a**

very long time for them to happen. It takes Jagex months to label an account as a goldfarmer. Just know that it happens..



logged in


[RuneScape Home](#) | [Logout](#)



Offence History

[View Rules of Conduct](#)

Ban



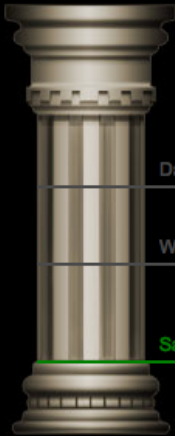
Danger!

Warning

Safe

This pillar is in the **red zone**. The red zone indicates that you have a dangerous amount of offences in this pillar and that any further offences could result in a permanent ban.

Mute



Danger!

Warning

Safe

This pillar is in the **green zone**. You currently have no offences in the pillar. If you continue to abide by the rules, you will not receive any mutes.

Account Status

**Banned:** Due to the high level of offences you have committed, your account has been permanently banned.

Your account is in the **red zone**. You have a large amount of offences on your account and as a result you are now permanently banned. You may be able to appeal some or all of the offences in your offence history. Look at the list of offences below, and click on 'Appeal'. To read the Rules of Conduct, [click here](#).

All Offences

Date	Rule	Offence	Type	Site	Expires	Status	Action	Evidence
20-Apr-2011	<a href="#">Macroing</a>	Macroing Goldfarmer	Ban	RuneScape	N/A	Appealable	<a href="#">Appeal</a>	<a href="#">View</a>



Another think you need to know is about the bans. Unfortunately they do and will happen. The first ban is 14 days.. the second is 21 days, and the third is 28. This is also assuming they didn't hit you with a "major" macro ban which is permanent. As soon as you get an account back after a ban it is wise for you to sell off any herbs you have remaining after the item rollback and transfer the gold to a mule as soon as possible. Many times my account has only been unbanned for 1 day after the first 14-day ban and then out of nowhere I am hit with the permanent "major" macro ban offense.

It is very important that you NEVER appeal your minor macro ban offense. Jagex knows you were botting so don't even try to make up an excuse. 9 out of 10 times, if you try to appeal it they will just PERMANENT BAN YOU. Its best to act like you don't care.

Now I would like to talk about how to not stand out as a botter. First off, bot hunters know that most level 3 accounts are bots in the first place and they label them as “throwaway bots.” For this reason just train your character to 10 combat. It should only take a few minutes.

Another important factor is the name of your account. Never have a name like 0oo0o0 o0o or IiilIli il i. You may think you are tricking the system but in reality those names are basically a giveaway to any bot hunter. No, that name won't confuse them. They will simply print screen it and report you in the lobby. The perfect name would be one that has meaning. No numbers! If you are too lazy to think of meaningful names (I know I was), you can get away with randomizing the name and just picking one of them that sounds good without numbers. For example, Sire Sword, Counemer, Jikeering. Honestly, bot hunters are too stupid to know these are gibberish names. They might think its Russian.

**Another obvious fault is wearing flashy gear such as party hats, even though I have no idea why your bots should even have one.**

**If you want to get very picky, bot hunters also sometimes look for characters that have the standard class clothing still. Take a few seconds to randomize it. Never choose pink hair as it will make you stand out. When you pick a pre dressed class, at least change the shirt and pants.**

**And if you haven't already noticed I talk a lot about bot hunters. Find their official thread on the Runescape forum. A lot of players are too lazy to do this but its one of the biggest reasons for bans. They DO actually cause a lot of bans. They typically only bot hunt on weekends.. Friday and Saturday being member locations and Sunday being non-member locations. So for example, I would find out the time on Friday and Saturday and make sure my bots were out of sorc garden at those times + 2 hours after. I leave 2 hours after because some of them will stay and hunt for a bit longer because they really have no life.**

If you have any questions, feel free to contact me through PM preferably.

Note that revenue per month is constantly changing due to the fluctuation of gp price and gp/hour made from a certain bot. As an example I will show you how to calculate the revenue for sorc garden this month assuming you were running 120 bots like I am:

\*Sorc garden makes approximately 180k/hour

\*GP is sold for approximately \$0.70/m

24 hours x 180k = 4.32 million gp

4.32m x 120 accounts = 518.4m/day

518.4m x 31 days = 16070.4m/month

16070.4m x \$0.70 (price of GP) = \$11249.28

Therefore there is revenue of over \$11k a month. Obviously this is not factoring in any bot downtime or bans.